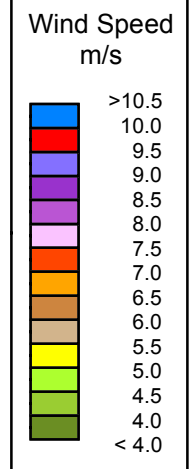
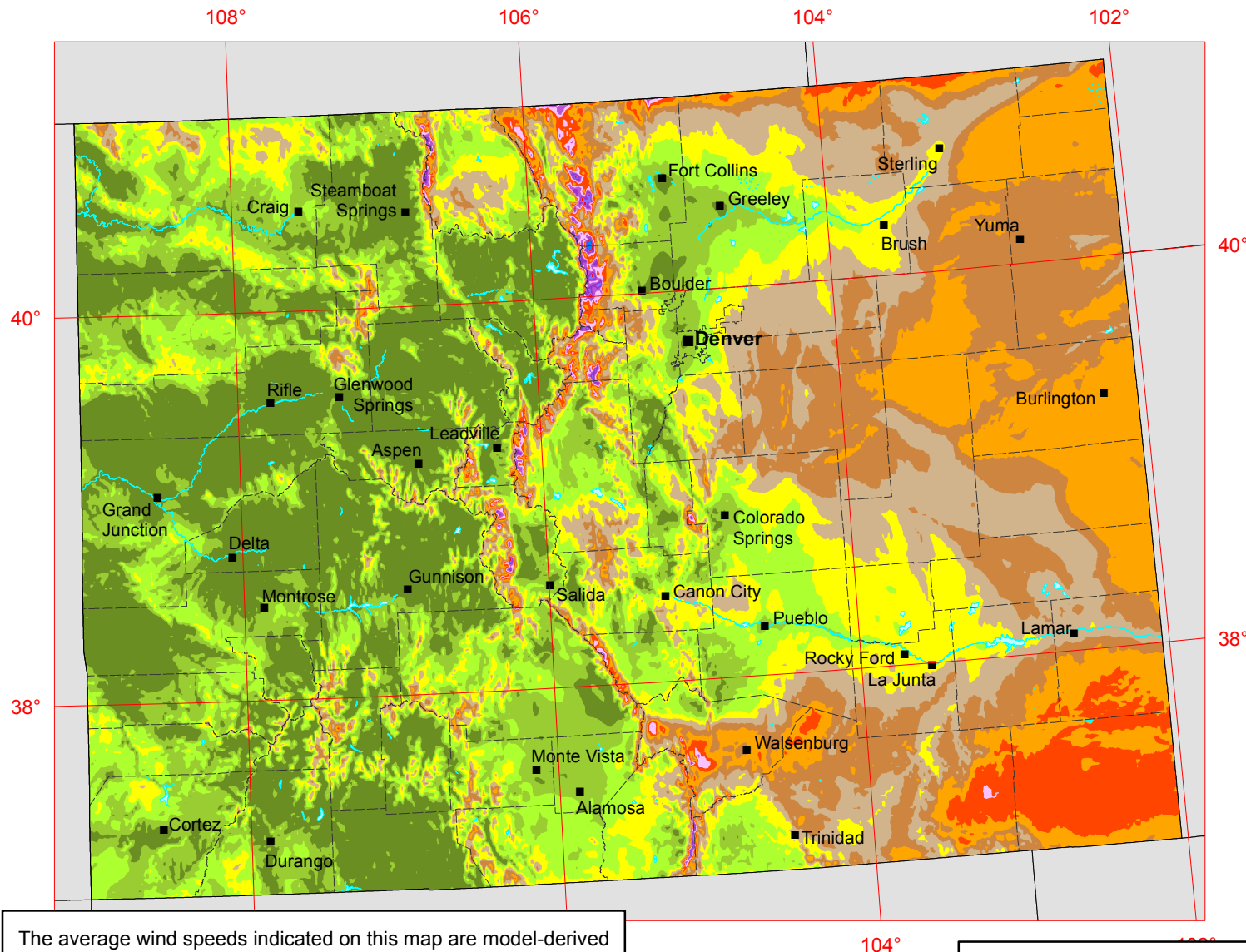


Colorado Annual Average Wind Speed at 30 m



The average wind speeds indicated on this map are model-derived estimates that may not represent the true wind resource at any given location. Small terrain features, vegetation, buildings, and atmospheric effects may cause the wind speed to depart from the map estimates. Expert advice should be sought in placing wind turbines and estimating their energy production.

Source: Wind resource estimates developed by AWS Truepower, LLC. Web: <http://www.awstruepower.com>. Map developed by NREL. Spatial resolution of wind resource data: 2.0 km. Projection: UTM Zone 12 WGS84.

