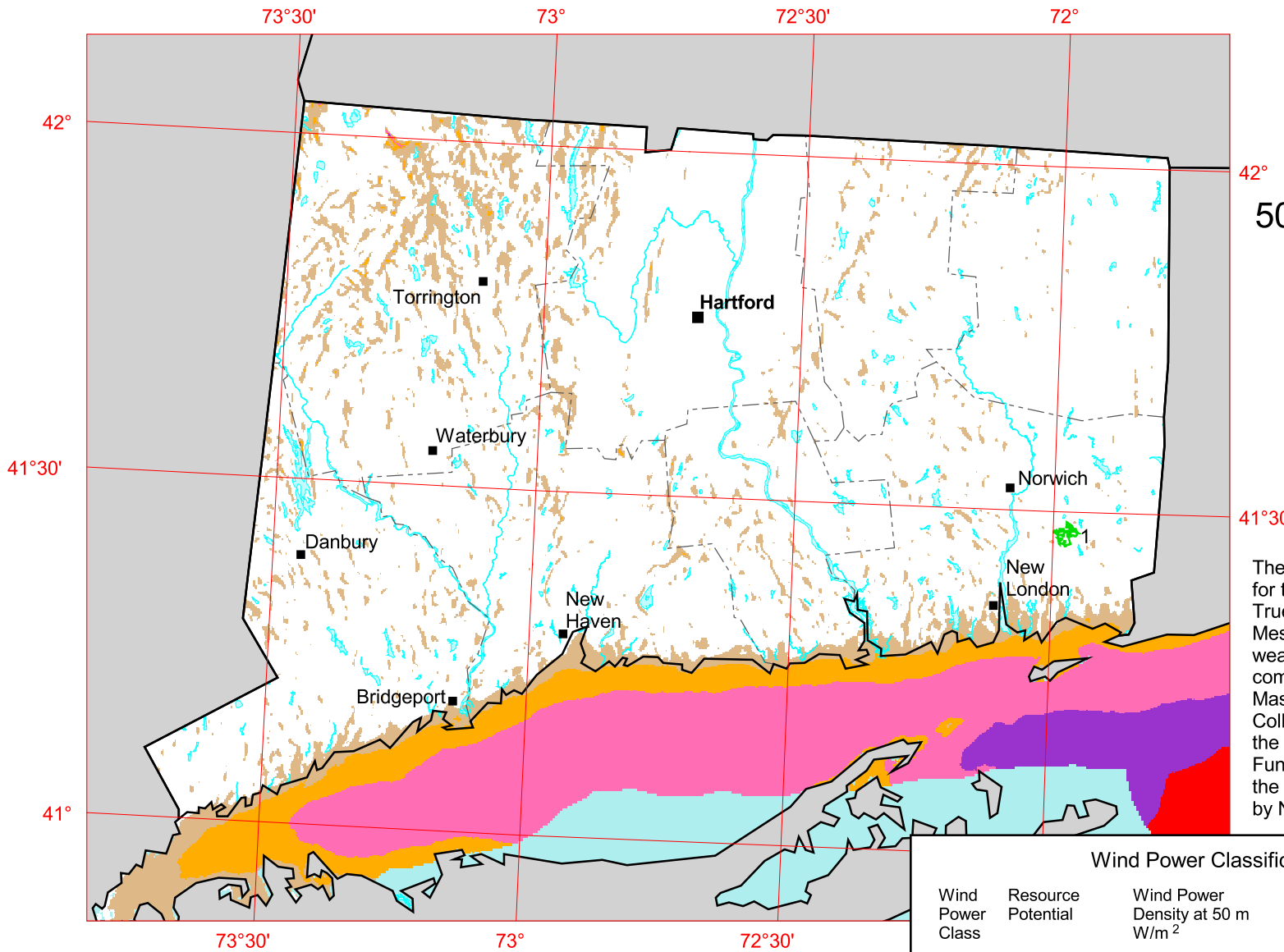


# Connecticut

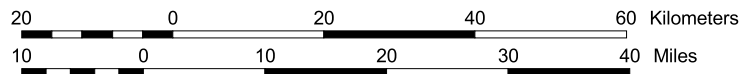
## 50 m Wind Power



The annual wind power estimates for this map were produced by TrueWind Solutions using their Mesomap system and historical weather data. This work was commissioned by the Massachusetts Technology Collaborative, in conjunction with the Connecticut Clean Energy Fund and Northeast Utilities, and the results have been validated by NREL.

Indian Reservation  
 1 Mashantucket Pequot

U.S. Department of Energy  
 National Renewable Energy Laboratory



| Wind Power Classification |                    |   |                                     |                                     |
|---------------------------|--------------------|---|-------------------------------------|-------------------------------------|
| Wind Power Class          | Resource Potential | Wind Power Density at 50 m W/m <sup>2</sup> | Wind Speed <sup>a</sup> at 50 m m/s | Wind Speed <sup>a</sup> at 50 m mph |
| 1                         | Poor               | 0 - 200                                     | 0.0 - 5.6                           | 0.0 - 12.5                          |
| 2                         | Marginal           | 200 - 300                                   | 5.6 - 6.4                           | 12.5 - 14.3                         |
| 3                         | Fair               | 300 - 400                                   | 6.4 - 7.0                           | 14.3 - 15.7                         |
| 4                         | Good               | 400 - 500                                   | 7.0 - 7.5                           | 15.7 - 16.8                         |
| 5                         | Excellent          | 500 - 600                                   | 7.5 - 8.0                           | 16.8 - 17.9                         |
| 6                         | Outstanding        | 600 - 800                                   | 8.0 - 8.8                           | 17.9 - 19.7                         |
| 7                         | Superb             | > 800                                       | > 8.8                               | > 19.7                              |

<sup>a</sup> Wind speeds are based on a Weibull k value of 2.0