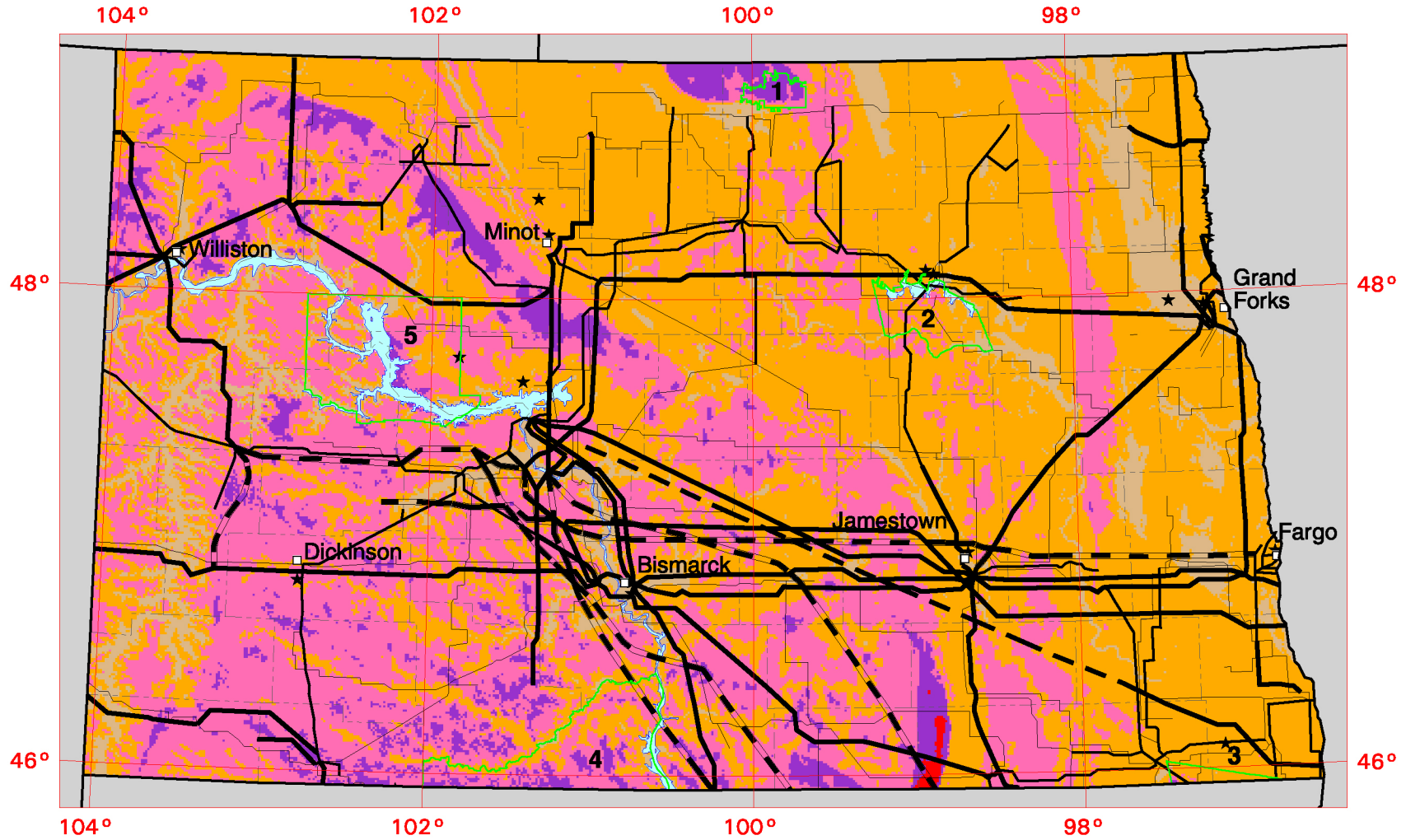


# North Dakota - Wind Resource Map



## Wind Power Classification

Wind Power Class	Resource Potential	Wind Power Density at 50 m W/m <sup>2</sup>	Wind Speed <sup>a</sup> at 50 m m/s	Wind Speed <sup>a</sup> at 50 m mph
2	Marginal	200 - 300	5.6 - 6.4	12.5 - 14.3
3	Fair	300 - 400	6.4 - 7.0	14.3 - 15.7
4	Good	400 - 500	7.0 - 7.5	15.7 - 16.8
5	Excellent	500 - 600	7.5 - 8.0	16.8 - 17.9
6	Outstanding	600 - 800	8.0 - 8.8	17.9 - 19.7

<sup>a</sup>Wind speeds are based on a Weibull k value of 2.0

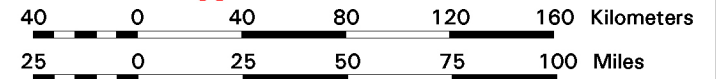
★ Meteorological Station with Wind Data  
 □ City or Town

## Transmission Line Voltage

- ~ 69 Kilovolts
- ~ 115 Kilovolts
- ~ 230 Kilovolts
- ~ 345 Kilovolts
- ~ Under Construction

## Indian Reservations

- 1 Turtle Mountain
- 2 Devil's Lake Sioux
- 3 Lake Traverse
- 4 Standing Rock
- 5 Fort Berthold



U.S. Department of Energy  
 National Renewable Energy Laboratory

