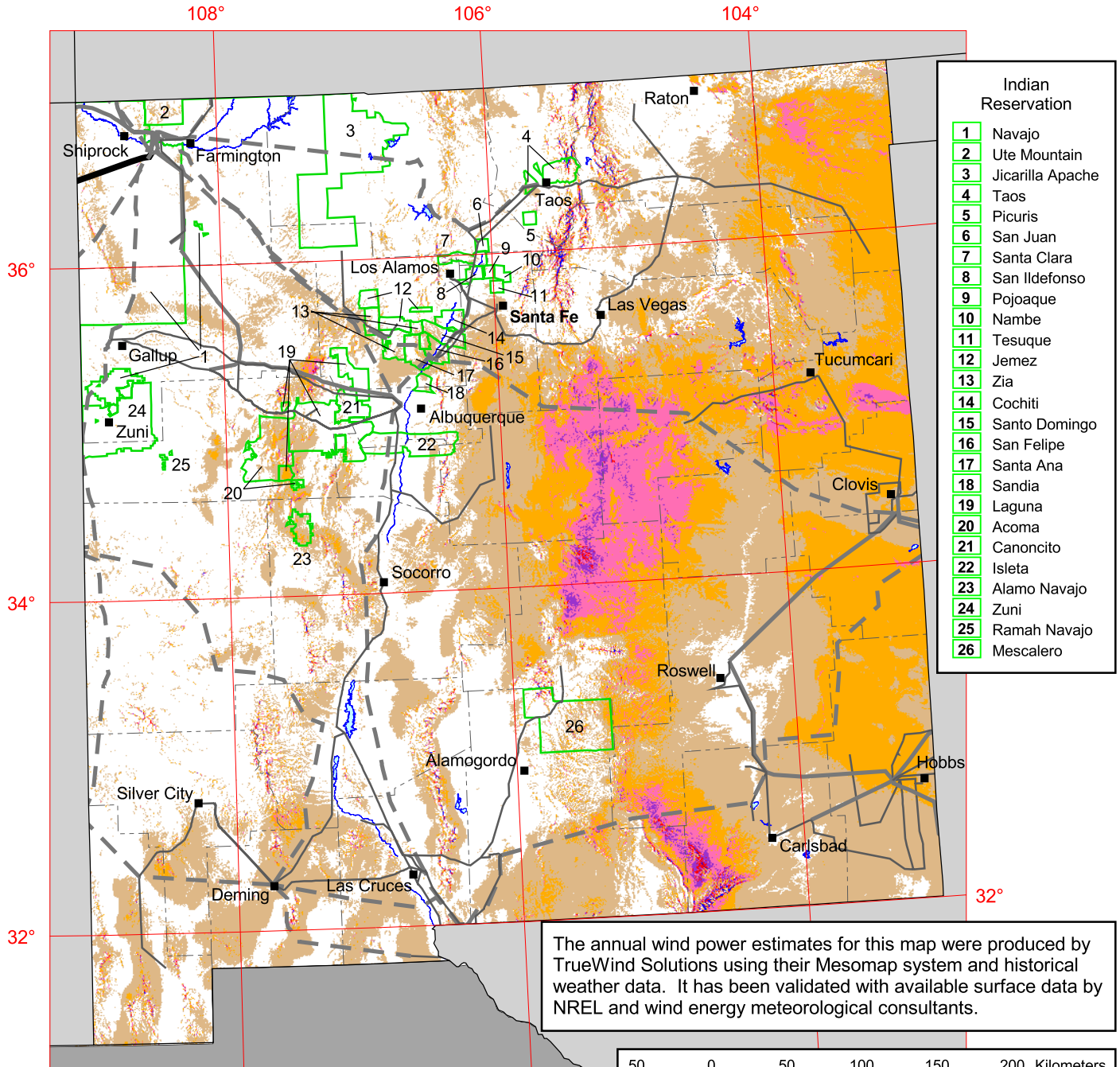
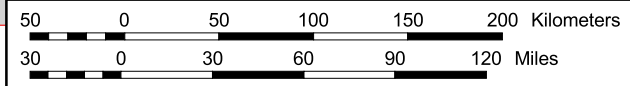


New Mexico - Wind Resource at 50 m



- Indian Reservation**
- 1 Navajo
 - 2 Ute Mountain
 - 3 Jicarilla Apache
 - 4 Taos
 - 5 Picuris
 - 6 San Juan
 - 7 Santa Clara
 - 8 San Ildefonso
 - 9 Pojoaque
 - 10 Nambe
 - 11 Tesuque
 - 12 Jemez
 - 13 Zia
 - 14 Cochiti
 - 15 Santo Domingo
 - 16 San Felipe
 - 17 Santa Ana
 - 18 Sandia
 - 19 Laguna
 - 20 Acoma
 - 21 Canonicito
 - 22 Isleta
 - 23 Alamo Navajo
 - 24 Zuni
 - 25 Ramah Navajo
 - 26 Mescalero



Wind Power Classification

Wind Power Class	Resource Potential	Wind Power Density at 50 m W/m ²	Wind Speed ^a at 50 m m/s	Wind Speed ^a at 50 m mph
1	Poor	0 - 200	0.0 - 5.9	0.0 - 13.2
2	Marginal	200 - 300	5.9 - 6.7	13.2 - 15.0
3	Fair	300 - 400	6.7 - 7.4	15.0 - 16.6
4	Good	400 - 500	7.4 - 7.9	16.6 - 17.7
5	Excellent	500 - 600	7.9 - 8.4	17.7 - 18.8
6	Outstanding	600 - 800	8.4 - 9.3	18.8 - 20.8
7	Superb	> 800	> 9.3	> 20.8

^a Wind speeds are based on a Weibull k of 2.0 at 1500 m elevation.

**Transmission Line*
Voltage (kV)**

- 115 - 138
- 230
- 345
- 500

* Source: POWERmap, ©2002 Platts, a Division of the McGraw-Hill Companies

