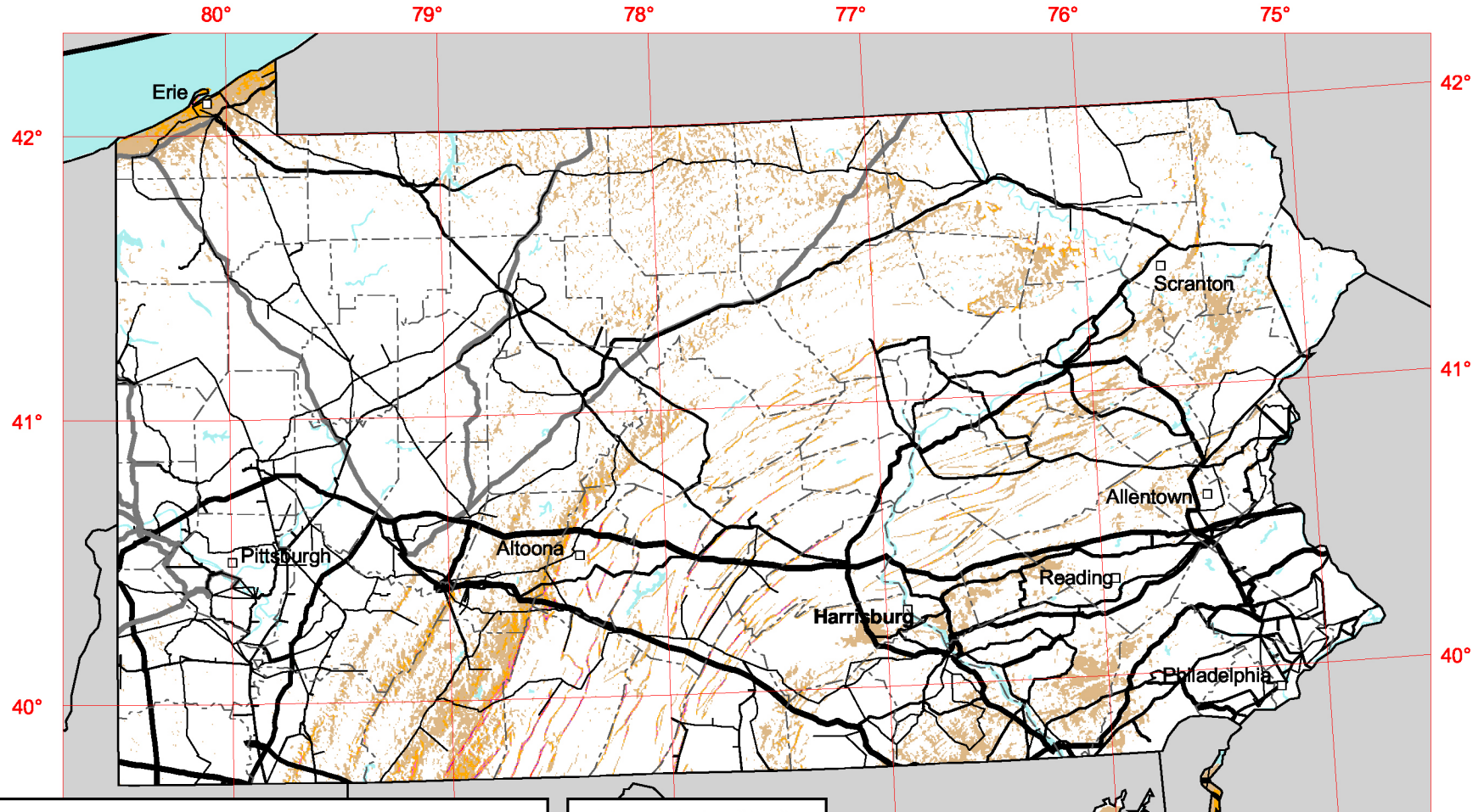


# Pennsylvania - 50 m Wind Resource Map

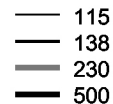


## Wind Power Classification

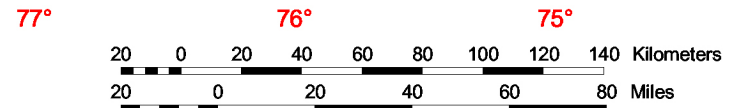
Wind Power Class	Resource Potential	Wind Power Density at 50 m $W/m^2$	Wind Speed <sup>a</sup> at 50 m m/s	Wind Speed <sup>a</sup> at 50 m mph
1	Poor	0 - 200	0.0 - 5.6	0.0 - 12.5
2	Marginal	200 - 300	5.6 - 6.4	12.5 - 14.3
3	Fair	300 - 400	6.4 - 7.0	14.3 - 15.7
4	Good	400 - 500	7.0 - 7.5	15.7 - 16.8
5	Excellent	500 - 600	7.5 - 8.0	16.8 - 17.9
6	Outstanding	600 - 800	8.0 - 8.8	17.9 - 19.7
7	Superb	> 800	> 8.8	> 19.7

<sup>a</sup> Wind speeds are based on a Weibull k value of 2.0

## Transmission Line\* Voltage (kV)



\* Source: POWERmap, ©2002  
Platts, a Division of the McGraw-Hill Companies



The annual wind power estimates for this map were produced by TrueWind Solutions using their Mesomap system

and historical weather data. It has been validated with available surface data by NREL and wind energy meteorological consultants.

U.S. Department of Energy  
National Renewable Energy Laboratory



12-JAN-2003 1.14.1