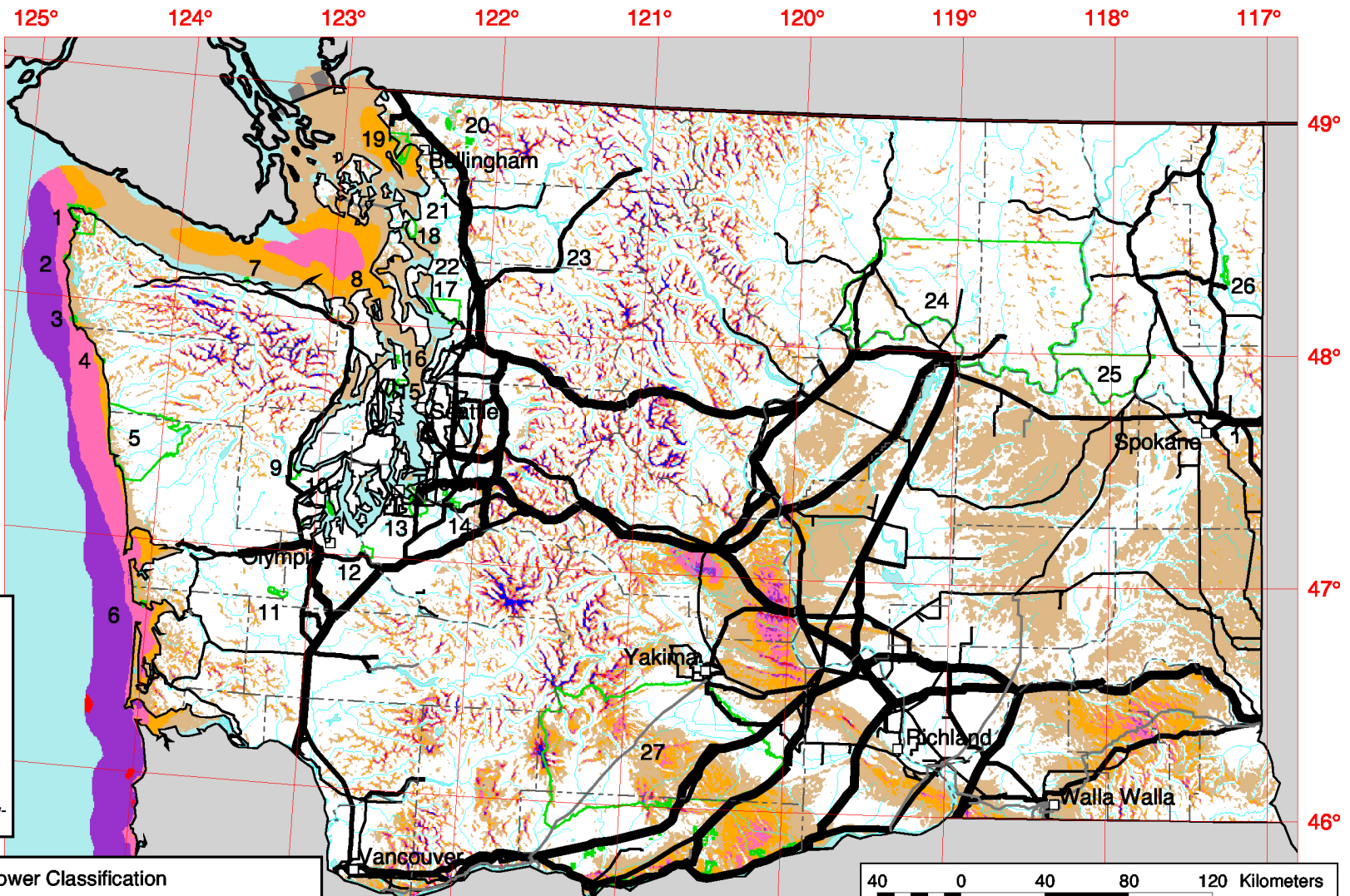


# Washington - Wind Power Resource Estimates

- Indian Reservation**
- 1 Makah
  - 2 Ozette
  - 3 Quileute
  - 4 Hoh
  - 5 Quinault
  - 6 Shoalwater Bay
  - 7 Lower Elwha
  - 8 Jamestown
  - 9 Skokomish
  - 10 Squaxin Island
  - 11 Chehalis
  - 12 Nisqually
  - 13 Puyallup
  - 14 Muckleshoot
  - 15 Port Madison
  - 16 Port Gamble
  - 17 Tulalip
  - 18 Swinomish
  - 19 Lummi
  - 20 Nooksack
  - 21 Upper Skagit
  - 22 Stillaquamish
  - 23 Sauk-Suiattle
  - 24 Colville
  - 25 Spokane
  - 26 Kalispel
  - 27 Yakama

- Transmission Line\*  
Voltage (kV)**
- 69
  - 115
  - 230 - 287
  - 345
  - 500
  - 1000 (DC)

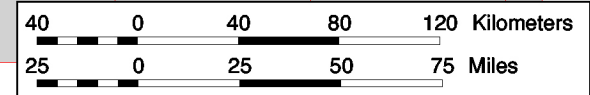
\* Source: POWERmap, © 2002  
Platts, a Division of the McGraw-Hill Companies



## Wind Power Classification

Wind Power Class	Resource Potential	Wind Power Density at 50 m W/m <sup>2</sup>	Wind Speed <sup>a</sup> at 50 m m/s	Wind Speed <sup>a</sup> at 50 m mph
2	Marginal	200 - 300	5.6 - 6.4	12.5 - 14.3
3	Fair	300 - 400	6.4 - 7.0	14.3 - 15.7
4	Good	400 - 500	7.0 - 7.5	15.7 - 16.8
5	Excellent	500 - 600	7.5 - 8.0	16.8 - 17.9
6	Outstanding	600 - 800	8.0 - 8.8	17.9 - 19.7
7	Superb	> 800	> 8.8	> 19.7

<sup>a</sup> Wind speeds are based on a Weibull k value of 2.0



The wind power resource data for this map was produced by TrueWind Solutions using the Mesomap system and historical weather data. It has been validated with available surface data by the National Renewable Energy Laboratory and wind energy meteorological consultants.

U.S. Department of Energy  
National Renewable Energy Laboratory



07-JUN-2002 1.1.11